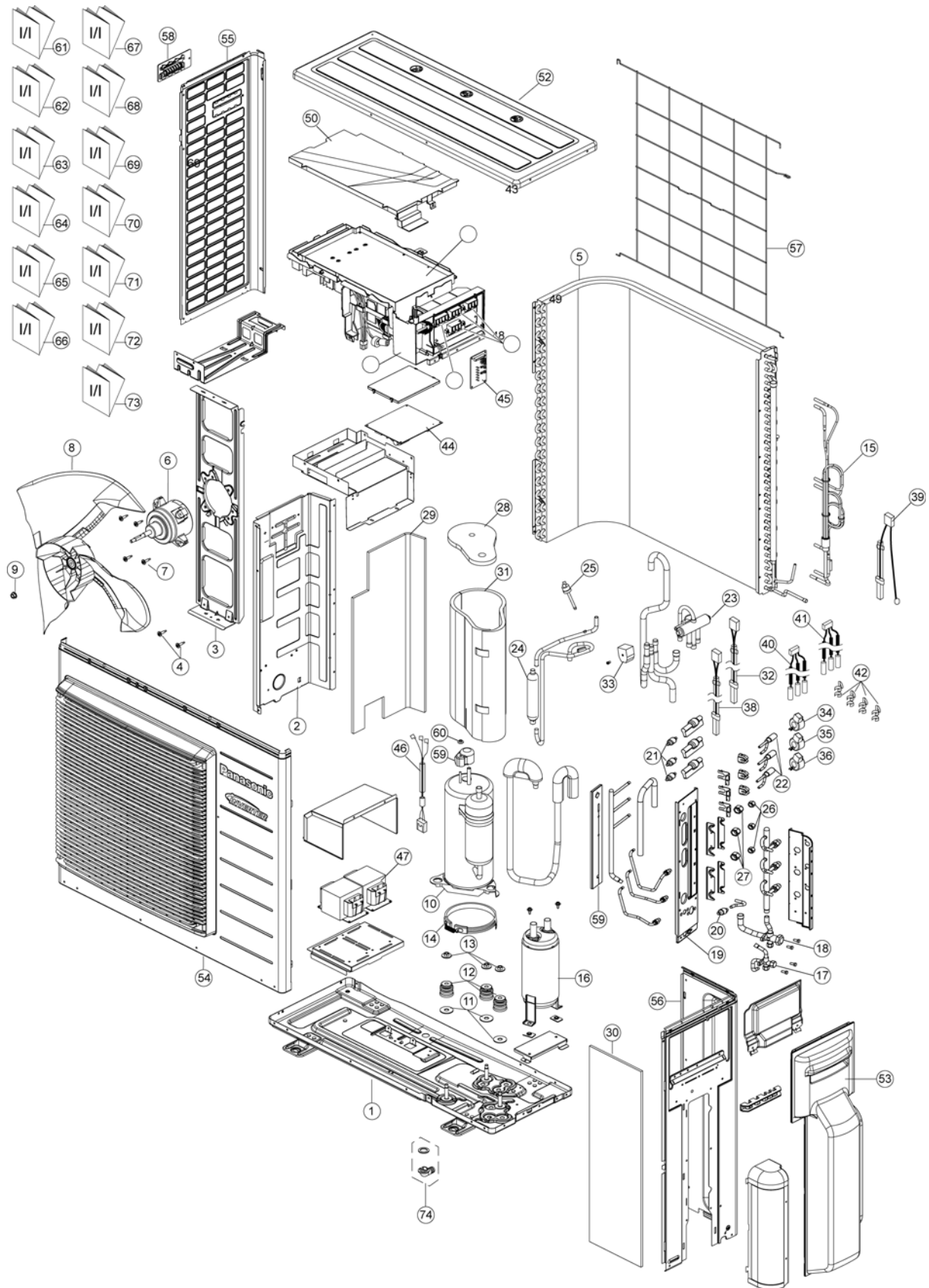


## 20.2. CU-3E18LBE CU-4E23LBE



### Note

The above exploded view is for the purpose of parts disassembly and replacement.  
The non-numbered parts are not kept as standard service parts.

REF. NO.	PART NAME & DESCRIPTION	QTY.	CU-3E18LBE	CU-4E23LBE	REMARKS
1	CHASSY ASSY	1	CWD52K1212	←	
2	SOUND PROOF BOARD	1	CWH151194	←	
3	FAN MOTOR BRACKET	1	CWD541127	←	
4	SCREW-BRACKET FAN MOTOR	3	CWH551217	←	
5	CONDENSER COMPLETE	1	CWB32C2680	←	
6	FAN MOTOR DC 60W 3PH	1	EHDS80C60AC	←	O
7	SCREW-FAN MOTOR MOUNT	4	CWH551016J	←	
8	PROPELLER FAN ASSY	1	CWH00K1006	←	
9	NUT	1	CWH561051	←	
10	COMPRESSOR	1	5KD184XAB21	←	
11	PACKING	3	CWB81043	←	
12	BUSHING - COMPRESSOR MOUNT	3	CWH50055	←	
13	NUT-COMPRESSOR MOUNT	3	CWH561049	←	
14	CRANKCASE HEATER	1	CWA341047	←	
15	TUBE ASSY (CAPILLARY TUBE)	1	CWT01C4955	←	
16	ACCUMULATOR	1	CWB131050	←	
17	3-WAY VALVE	1	CWB011601	←	
18	3-WAY VALVE	1	CWB011602	←	
19	HOLDER COUPLING	1	CWH351141	←	
20	STRAINER	1	CWB11061	←	
21	STRAINER	3/4	CWB111024	←	
22	EXPANSION VALVE	3	CWB051029	←	
23	4-WAYS VALVE	1	CWB001026J	←	
24	DISCHARGE MUFFLER	1	CWB121014	←	
25	HEATING PRESSURE SWITCH	1	CWA101007	←	
26	FLARE NUT (1/4)	3/4	CWT251030	←	
27	FLARE NUT (3/8)	3/4	CWT251031	←	
28	SOUND PROOF MATERIAL	1	CWG302246	←	
29	SOUND PROOR MATERIAL	1	CWG302520	←	
30	SOUND PROOR MATERIAL	1	CWG302521	←	
31	SOUND PROOR MATERIAL	1	CWG302522	←	
32	SENSOR COMPLETE	1	CWA50C2515	←	O
33	V-COIL COMPLETE (4 WAY VALVE)	1	CWA43C2169J	←	O
34	V-COIL COMPLETE (EXPAND VALVE-WHITE)	1	CWA43C2334	←	O
35	V-COIL COMPLETE (EXPAND VALVE-YELLOW)	1	CWA43C2335	←	O
36	V-COIL COMPLETE (EXPAND VALVE-BLUE)	1	CWA43C2336	←	O
38	SENSOR-COMPLETE	1	CWA50C2625	←	O
39	SENSOR COMPLETE (OUTLET TEMP SENSOR)	1	CWA50C2517	←	O
40	SENSOR-COMPLETE (CN-TH4)	1	CWA50C2620	CWA50C2616	O
41	SENSOR-COMPLETE (CN-TH3)	1	CWA50C2622	CWA50C2617	O
43	ELECTRONIC CONTROLLER	1	CWA73C3817RX	CWA73C3815RX	O
44	ELECT.CONTROLLER-NOISE FILTER	1	CWA745291	←	O
45	ELECTRONIC CONTROLLER (DISPLAY)	1	CWA745292	←	O
47	REACTOR	2	G0C403J00001	←	
48	TERMINAL BOARD ASSY	1	CWA28K1195	←	
49	TERMINAL BOARD ASSY	4	CWA28K1196	←	
50	CONTROL BOARD COVER	1	CWH131333	←	
52	CABINET TOP PLATE	1	CWE031083A	←	
53	CONTROL BOARD COVER	1	CWH13C1194	←	
54	CABINET FRONT PLATE	1	CWE06K1065	←	
55	CABINET SIDE PLATE	1	CWE041317A	←	
56	CABINET SIDE PLATE	1	CWE041395A	←	
57	WIRE NET	1	CWD041128A	←	
58	HANDLE	1	CWE161010	←	
59	TERMINAL COVER	1	CWH171035	←	

REF. NO.	PART NAME & DESCRIPTION	QTY.	CU-3E18LBE	CU-4E23LBE	REMARKS
60	NUT-TERMINAL COVER	1	CWH7080300J	←	
61	INSTALLATION INSTRUCTION	1	CWF614367	←	
62	INSTALLATION INSTRUCTION	1	CWF614368	←	
63	INSTALLATION INSTRUCTION	1	CWF614369	←	
64	INSTALLATION INSTRUCTION	1	CWF614370	←	
65	INSTALLATION INSTRUCTION	1	CWF614371	←	
66	INSTALLATION INSTRUCTION	1	CWF614372	←	
67	INSTALLATION INSTRUCTION	1	CWF614373	←	
68	INSTALLATION INSTRUCTION	1	CWF614374	←	
69	INSTALLATION INSTRUCTION	1	CWF614375	←	
70	INSTALLATION INSTRUCTION	1	CWF614376	←	
71	INSTALLATION INSTRUCTION	1	CWF614377	←	
72	INSTALLATION INSTRUCTION	1	CWF614378	←	
73	INSTALLATION INSTRUCTION	1	CWF614379	←	
74	ACCESSORY CO. (DRAIN ELBOW)	1	CWG87C900	←	

(NOTE)

- All parts are supplied from PHAAM, Malaysia (Vendor Code: 00029488).
- "O" marked parts are recommended to be kept in stock.